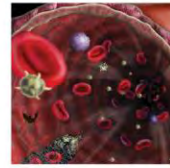


FALL GRANTS CONFERENCE



NOVEMBER 18 - 19, 2019 • BOSTON, MASSACHUSETTS

Policy Update



Speakers

Anne Doyle

Senior Policy Analyst, Policy Office
Division of Institution & Award Support
Office of Budget, Finance & Award
Management



Jeremy Leffler

Outreach Specialist, Policy Office
Division of Institution & Award Support
Office of Budget, Finance & Award
Management

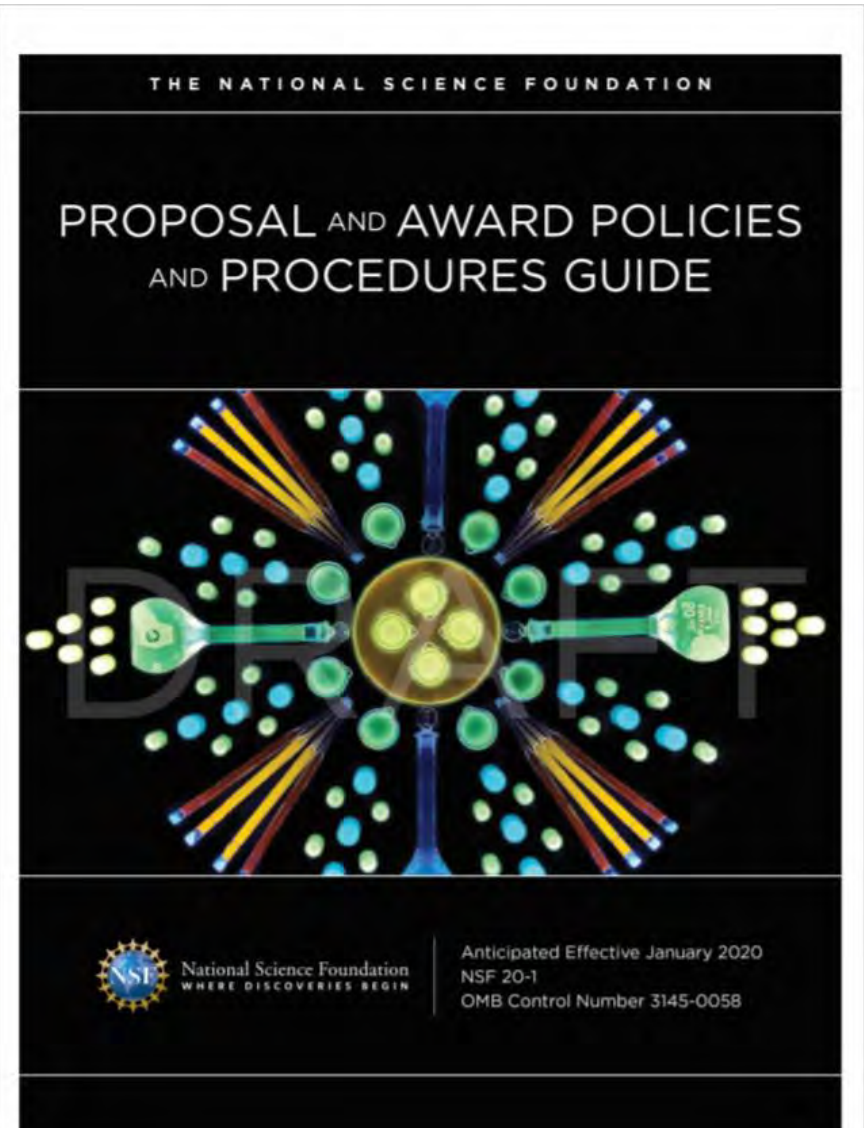


Topics

- PAPPG Implementation
- Proposed Changes to Biographical Sketch and Current and Pending Support
- PAPPG Proposed Significant Changes and Clarifications
- Research Protection Policy Implementation
- NSF Policy FAQs
- Proposal Submission in Research.gov

PAPPG Implementation Schedule

- Spring 2019 – Federal Register for public comment
- Comments were submitted by July 29, 2019 in response to proposed changes
- PAPPG is typically posted in October with an implementation date of January



2020 PAPPG Implementation Schedule

What Do We Know?

- NSF received a significant number of comments in response to the draft PAPPG; approximately one-third of these comments related to coverage on Current and Pending Support (C&PS).
- The actual posting date and implementation date remain TBD.

NSF and SciENCv

- In the draft PAPPG, NSF announced that it will only accept PDFs for the Biographical Sketch and Current and Pending Support that are generated through use of an NSF-approved format.
- NSF announced that SciENCv was selected as an NSF-approved format for the biographical sketch and encouraged faculty to begin using the NSF template in SciENCv.
- NSF has been working with NIH to ensure that the biographical sketch template in SciENCv meets all NSF formatting and content requirements.
- NSF also is collaborating with NIH to develop a template for use in submission of Current and Pending Support information.

Biographical Sketch and SciENcv Resources



SciENcv: Science Experts Network Curriculum Vitae
A researcher profile system for all individuals who apply for, receive or are associated with research investments from federal agencies. SciENcv is available in My NCBI.

- About SciENcv**
- [Background Information](#)
 - [SciENcv FAQs](#)
 - [YouTube Video: SciENcv t](#)
 - [YouTube Video: Integrati](#)
 - [Recent Changes to NIH B](#)
 - [Provide Feedback](#)

SciENcv FAQs

- [What is SciENcv?](#)
- [Who operates SciENcv?](#)
- [How can our institutional systems to interface with SciENcv?](#)
- [Where can I find the data schema for SciENcv?](#)



What is SciENcv?

Science Experts Network Curriculum Vitae (SciENcv)

What operates SciENcv?

SciENcv is a cooperative project requested by the [E](#) In collaboration with FDP, the product is being built interagency workgroup composed of members from Health, the National Science Foundation (NSF), The

How can our institutional profile systems inter

There is a plan to establish an interface with API to download and as an attachment of the PDF downlo

Where can I find the data schema for SciENcv:

The SciENcv data schema is [available here](#) .

SciENcv: Science Experts Network Curriculum Vitae
www.ncbi.nlm.nih.gov/sciencv

NCBI

0:00 / 3:33



Proposed PAPPG Clarification: Current & Pending Support

- An internal working group was formed to consider the feedback provided as well as to develop proposed responses. Each comment has been thoughtfully and thoroughly considered.
 - Based on the input, there will definitely be implications for the C&PS coverage in the PAPPG.
 - The recommended responses to the comments and the revised draft PAPPG have been considered by NSF senior management, and it is currently under review by OMB.
 - There will not be a November or December posting of the PAPPG on the NSF website, and there will not be a January 2020 PAPPG effective date.

Proposed PAPPG Clarification: Responsible and Ethical Conduct of Research (RECR)

- RECR involves not only a responsibility to generate and disseminate knowledge with rigor and integrity, but also a responsibility to:
 - Conduct peer review with the highest ethical standards;
 - Diligently protect proprietary information and intellectual property from inappropriate disclosure; and
 - Treat students and colleagues fairly and with respect.

PAPPG Additional Proposed Significant Changes

- Submission of government-wide proposal representations and certifications
- Participant Support clarification
- Publication/Documentation/Dissemination Costs
- RAPID and EAGER proposals – how they may not be used and correspondence requirement

Research Protection – Dear Colleague Letter

- Committed to maintaining strength of US research and engineering enterprise.
- Risks associated with foreign endeavors to benefit without upholding openness, transparency and reciprocal collaboration.
- NSF is taking steps to mitigate risks in concert with other agencies and stakeholders
 - Reminder of Federal ethics rules sent to NSF staff
 - Sources of support (both foreign and domestic) are required of all senior project personnel
 - Issued policy making it clear that NSF personnel may not participate in foreign government talent recruitment programs

Recent Questions to policy@nsf.gov

The approved RPPR format requires PIs and senior personnel to report changes in other active support in annual and final project reports. However, there is no mechanism in the NSF format in Research.gov to report this. How should we report this information?

The updated RPPR requires reporting of other support, your PIs should be following the NSF approved format in Research.gov which does not currently have a mechanism to report this addition. NSF is working with our technical team to make this and other necessary changes to the NSF RPPR format and anticipate these changes going into effect in 2020.

Recent Questions to policy@nsf.gov

If a postdoc is listed as a co-PI in a proposal and is committing 100% effort to the project, does the 2-month rule apply?

The two month rule applies to all senior personnel. As a general policy, NSF limits the salary compensation requested in the proposal budget for senior personnel to no more than two months of their regular salary in any one year. This policy does, however, allow for flexibility to request more than two months of salary per year, when applicable. If proposers request more than two months, the needed salary support should be put on the proposal budget and will need to be very well justified in the budget justification. If more than 2 months is approved by NSF, it will be included on the award budget.

Recent Questions to policy@nsf.gov

Can you provide general guidance about the definition of a participant? Is the definition of a participant based on the primary purpose of the attendance or is it based on the length of conference attendance?

Speakers and trainers generally are not considered participants and should not be included in this section of the budget. However, if the primary purpose of the individual's attendance at the conference is learning and receiving training as a participant, then the costs may be included under participant support. If the primary purpose is to speak or assist with management of the conference, then such costs should be budgeted in appropriate categories other than participant support. The determination of whether a person is a participant or not is based on the primary purpose of the individual's attendance at the event. The length of time they are attending the event is irrelevant.

Recent Questions to policy@nsf.gov

Our institution has two branch campuses. How would NSF consider this when submitting proposals that limit the number of proposals an institution can submit?

Let's say the solicitation limits the number of proposals an institution can submit to three. NSF's long-standing stance on the definition of "organization" is that, in addition to having its own DUNS number and being registered in FastLane, organizations must have separate Sponsored Projects Offices that have the ability to submit proposals directly to NSF.

Recent Questions to policy@nsf.gov

The PI of a declined proposal left our institution. We would like to submit a similar proposal, however, we cannot access the reviews of the declined proposal. Does the intellectual property in this situation belong to the PI or the submitting institution?

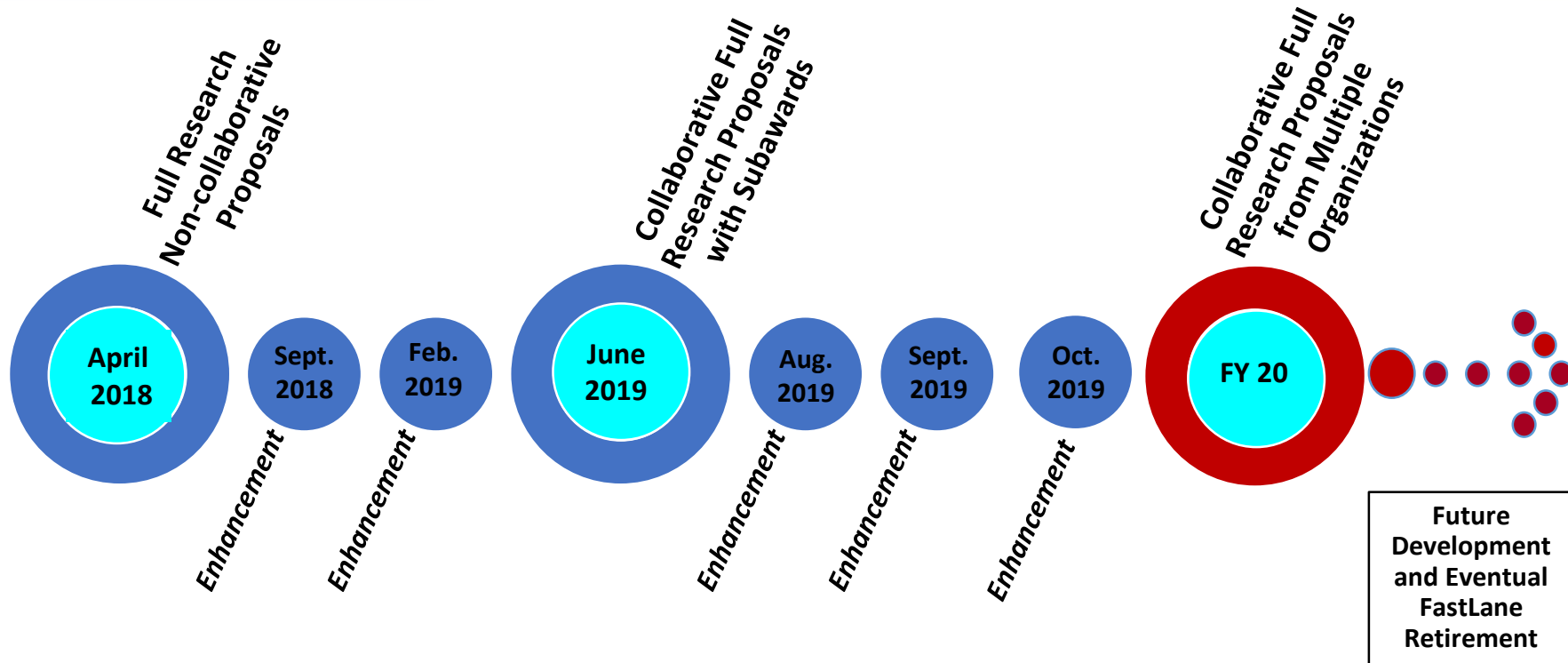
The institution would need to look at their employment contracts with their professions/employees. Our understanding is that usually institutions allow the employee to own the IP with respect to things the employee has written, such as articles, etc., so that may apply to a funding proposal as well, but the contract could provide that funding proposal submissions belong to the institution. It's a question the institution would need to answer.

Recent Questions to policy@nsf.gov

If a grad student is appointed to an NSF funded grant is it required that they are a US Citizen?

Some solicitations may establish eligibility restrictions for students participating on NSF-funded projects and if so, the guidance in the solicitation must be followed. As a general rule, however, unless otherwise stated in the solicitation, NSF grantees are allowed to provide grant funds to non-U.S. citizens who are working on an NSF award.

Proposal Submission in Research.gov – Current and Upcoming Capabilities



[Research.gov Proposal System Release Timeline](#)

Proposal Submission in Research.gov – Looking Ahead

Future Development Activities

- Additional proposal types (e.g., EAGER, RAPID)
- Additional submission types (e.g., Letters of Intent and Preliminary Proposals)
- Unique modules (e.g., SBIR/STTR, GRFP)
- Additional Single Copy Documents, proposal-specific documents and forms (e.g., Substitute Negotiator, DUE form), and solicitation-specific proposal sections

Note: the PAPPG is not being revised to incorporate specific proposal preparation and submission instructions for Research.gov.

Why Prepare Proposals in Research.gov?

You are helping to build Research.gov.

Here are some of the features that proposers are enjoying:

- Integrated compliance checks for fonts, margins, and line spacing
- Real-time compliance feedback and alerts, so proposers know a proposal section is compliant before moving on to another section
- Specific checks on the budget screens and for Collaborators and Other Affiliations (COA) uploads
- A few seconds to upload documents versus 30-90 seconds for each document upload in FastLane
- Embedded relevant sections of the Proposal & Award Policies & Procedures Guide (PAPPG) and video job aids, so proposers don't have to go to multiple sites to access guidance and tools

For More Information

“Ask Early, Ask Often!”

- [nsf.gov/staff](https://www.nsf.gov/staff)
- [nsf.gov/staff/orglist.jsp](https://www.nsf.gov/staff/orglist.jsp)
- [nsf.gov/about/career_opps/rotators/index.jsp](https://www.nsf.gov/about/career_opps/rotators/index.jsp)

